



Economic Overview

Queen Annes County, Maryland



Demographic Profile.....	3
Employment Trends	5
Unemployment Rate	5
Wage Trends	6
Cost of Living Index	7
Industry Snapshot	8
Occupation Snapshot	10
Industry Clusters	12
Education Levels.....	13
Gross Domestic Product.....	14
Queen Annes County, Maryland Regional Map.....	15
FAQ.....	16

Demographic Profile

The population in Queen Annes County, Maryland was 50,163 per American Community Survey data for 2016-2020.

The region has a civilian labor force of 26,506 with a participation rate of 65.3%. Of individuals 25 to 64 in Queen Annes County, Maryland, 37.2% have a bachelor's degree or higher which compares with 34.3% in the nation.

The median household income in Queen Annes County, Maryland is \$96,467 and the median house value is \$363,300.

Summary¹

	Percent			Value		
	Queen Annes County, Maryland	Maryland	USA	Queen Annes County, Maryland	Maryland	USA
Demographics						
Population (ACS)	—	—	—	50,163	6,037,624	326,569,308
Male	49.8%	48.5%	49.2%	24,958	2,925,644	160,818,530
Female	50.2%	51.5%	50.8%	25,205	3,111,980	165,750,778
Median Age ²	—	—	—	44.7	38.8	38.2
Under 18 Years	21.4%	22.2%	22.4%	10,753	1,340,766	73,296,738
18 to 24 Years	7.3%	8.8%	9.3%	3,642	532,160	30,435,736
25 to 34 Years	10.2%	13.7%	13.9%	5,112	829,403	45,485,165
35 to 44 Years	11.5%	12.9%	12.7%	5,756	776,058	41,346,677
45 to 54 Years	14.7%	13.5%	12.7%	7,389	817,301	41,540,736
55 to 64 Years	15.8%	13.4%	12.9%	7,918	811,061	42,101,439
65 to 74 Years	11.2%	9.1%	9.4%	5,615	546,754	30,547,950
75 Years and Over	7.9%	6.4%	6.7%	3,978	384,121	21,814,867
Race: White	87.7%	54.2%	70.4%	43,995	3,275,048	229,960,813
Race: Black or African American	5.9%	29.9%	12.6%	2,961	1,803,128	41,227,384
Race: American Indian and Alaska Native	0.1%	0.3%	0.8%	52	15,860	2,688,614
Race: Asian	1.1%	6.4%	5.6%	549	384,429	18,421,637
Race: Native Hawaiian and Other Pacific Islander	0.0%	0.0%	0.2%	13	2,650	611,404
Race: Some Other Race	1.4%	4.7%	5.1%	727	285,370	16,783,914
Race: Two or More Races	3.7%	4.5%	5.2%	1,866	271,139	16,875,542
Hispanic or Latino (of any race)	4.1%	10.3%	18.2%	2,065	619,418	59,361,020
Population Growth						
Population (Pop Estimates) ⁴	—	—	—	51,167	6,055,802	329,484,123
Population Annual Average Growth ⁴	0.7%	0.5%	0.6%	336	26,702	2,015,698
People per Square Mile	—	—	—	135.5	622.8	92.9
Economic						
Labor Force Participation Rate and Size (civilian population 16 years and over)	65.3%	67.4%	63.2%	26,506	3,243,851	164,759,496
Prime-Age Labor Force Participation Rate and Size (civilian population 25-54)	84.6%	86.0%	82.4%	15,395	2,065,798	105,137,520
Armed Forces Labor Force	0.2%	0.7%	0.4%	70	32,103	1,143,342
Veterans, Age 18-64	5.4%	5.4%	4.5%	1,592	202,011	8,920,267
Veterans Labor Force Participation Rate and Size, Age 18-64	82.2%	83.2%	76.8%	1,308	168,043	6,853,673
Median Household Income ²	—	—	—	\$96,467	\$87,063	\$64,994
Per Capita Income	—	—	—	\$45,228	\$43,352	\$35,384
Mean Commute Time (minutes)	—	—	—	36.0	33.0	26.9
Commute via Public Transportation	1.4%	7.4%	4.6%	355	226,646	7,044,886
Educational Attainment, Age 25-64						
No High School Diploma	4.9%	8.4%	10.5%	1,287	271,152	17,929,220
High School Graduate	28.5%	23.0%	25.4%	7,464	744,390	43,289,555

Summary¹

	Percent			Value		
	Queen Annes County, Maryland	Maryland	USA	Queen Annes County, Maryland	Maryland	USA
Some College, No Degree	19.8%	19.0%	20.5%	5,189	613,931	34,959,338
Associate's Degree	9.5%	7.2%	9.3%	2,492	232,557	15,776,790
Bachelor's Degree	23.5%	23.1%	21.6%	6,161	747,880	36,888,244
Postgraduate Degree	13.7%	19.3%	12.7%	3,582	623,913	21,630,870
Housing						
Total Housing Units	—	—	—	21,363	2,459,650	138,432,751
Median House Value (of owner-occupied units) ²	—	—	—	\$363,300	\$325,400	\$229,800
Homeowner Vacancy	1.5%	1.4%	1.4%	241	22,023	1,129,755
Rental Vacancy	2.5%	5.7%	5.8%	97	44,432	2,704,553
Renter-Occupied Housing Units (% of Occupied Units)	19.8%	32.9%	35.6%	3,769	734,699	43,552,843
Occupied Housing Units with No Vehicle Available (% of Occupied Units)	3.1%	8.8%	8.5%	594	196,074	10,344,521
Social						
Poverty Level (of all people)	6.2%	9.0%	12.8%	3,058	531,553	40,910,326
Households Receiving Food Stamps/SNAP	7.0%	10.1%	11.4%	1,333	224,592	13,892,407
Enrolled in Grade 12 (% of total population)	1.2%	1.3%	1.3%	603	79,896	4,358,865
Disconnected Youth ³	1.1%	2.0%	2.5%	25	6,089	433,164
Children in Single Parent Families (% of all children)	22.5%	34.5%	34.0%	2,289	440,091	23,628,508
Uninsured	4.3%	5.9%	8.7%	2,141	352,186	28,058,903
With a Disability, Age 18-64	8.1%	8.9%	10.3%	2,371	327,152	20,231,217
With a Disability, Age 18-64, Labor Force Participation Rate and Size	45.2%	48.7%	43.2%	1,072	159,290	8,740,236
Foreign Born	4.3%	15.2%	13.5%	2,156	916,067	44,125,628
Speak English Less Than Very Well (population 5 yrs and over)	1.7%	7.0%	8.2%	824	396,869	25,312,024

Source: [JobsEQ®](#)

1. American Community Survey 2016-2020, unless noted otherwise

2. Median values for certain aggregate regions (such as MSAs) may be estimated as the weighted averages of the median values from the composing counties.

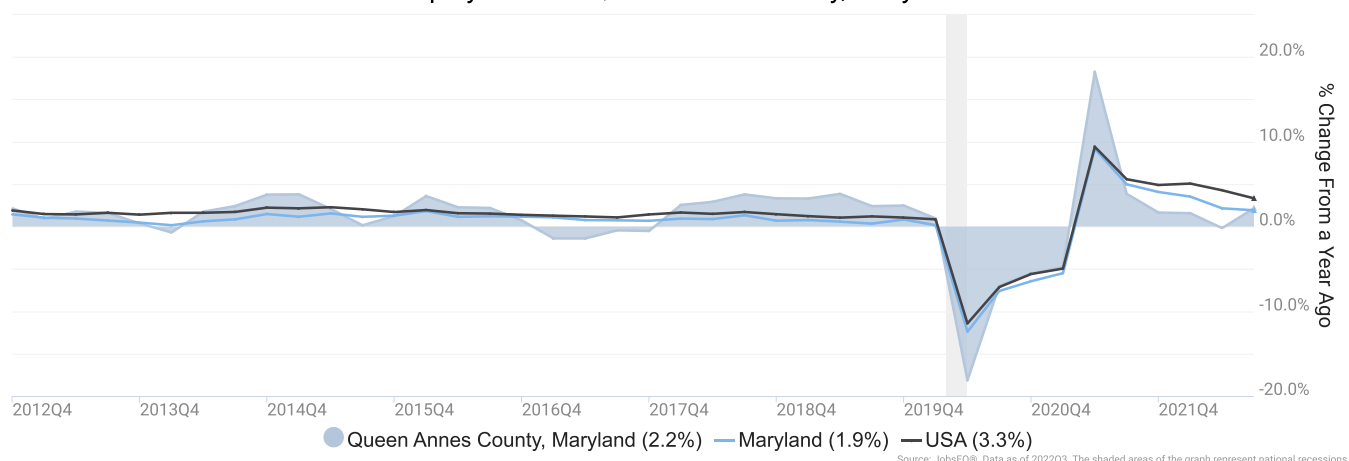
3. Disconnected Youth are 16-19 year olds who are (1) not in school, (2) not high school graduates, and (3) either unemployed or not in the labor force.

4. Census Population Estimate for 2020, annual average growth rate since 2010.

Employment Trends

As of 2022Q3, total employment for Queen Annes County, Maryland was 17,221 (based on a four-quarter moving average). Over the year ending 2022Q3, employment increased 2.2% in the region.

Employment for Queen Annes County, Maryland

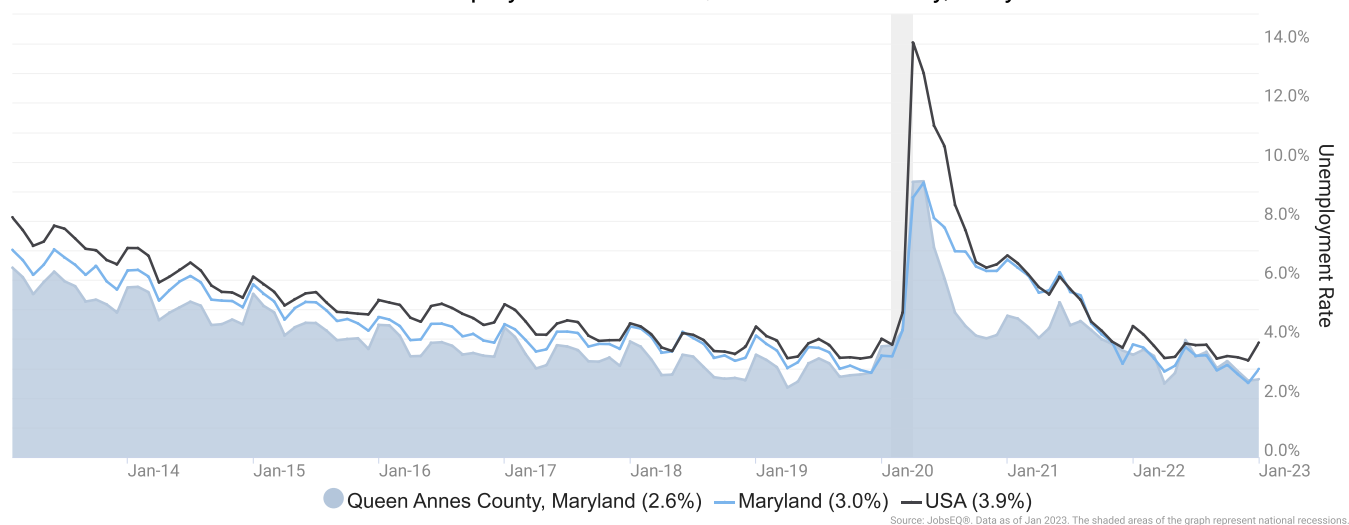


Employment data are derived from the Quarterly Census of Employment and Wages, provided by the Bureau of Labor Statistics and imputed where necessary. Data are updated through 2022Q2 with preliminary estimates updated to 2022Q3.

Unemployment Rate

The unemployment rate for Queen Annes County, Maryland was 2.6% as of January 2023. The regional unemployment rate was lower than the national rate of 3.9%. One year earlier, in January 2022, the unemployment rate in Queen Annes County, Maryland was 3.5%.

Unemployment Rate for Queen Annes County, Maryland

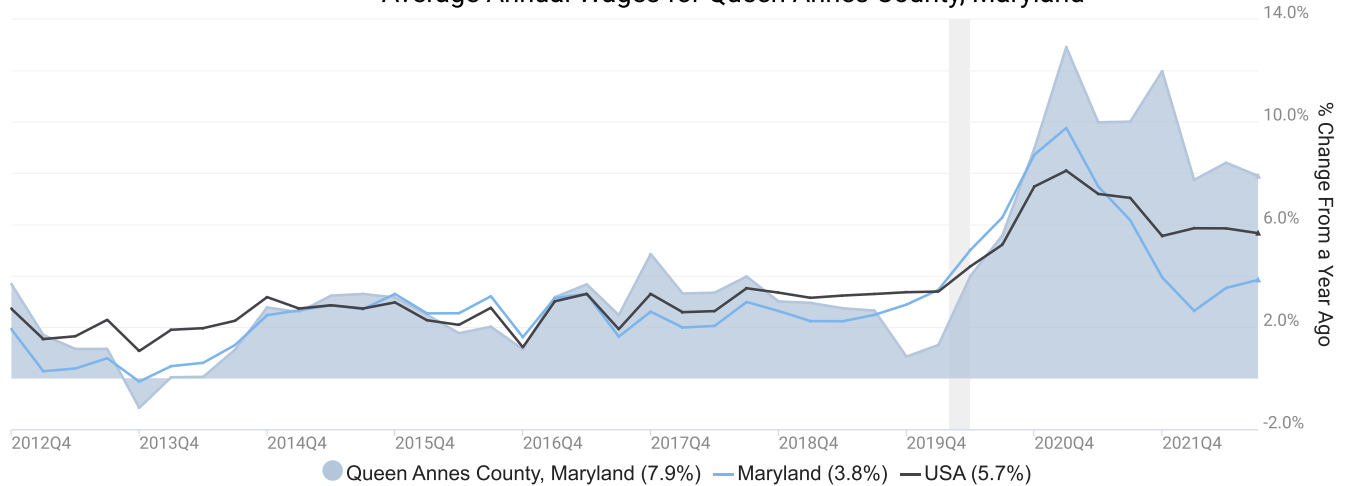


Unemployment rate data are from the Local Area Unemployment Statistics, provided by the Bureau of Labor Statistics and updated through January 2023.

Wage Trends

The average worker in Queen Annes County, Maryland earned annual wages of \$52,957 as of 2022Q3. Average annual wages per worker increased 7.9% in the region over the preceding four quarters. For comparison purposes, annual average wages were \$68,132 in the nation as of 2022Q3.

Average Annual Wages for Queen Annes County, Maryland



Annual average wages per worker data are derived from the Quarterly Census of Employment and Wages, provided by the Bureau of Labor Statistics and imputed where necessary. Data are updated through 2022Q2 with preliminary estimates updated to 2022Q3.

Cost of Living Index

The Cost of Living Index estimates the relative price levels for consumer goods and services. When applied to wages and salaries, the result is a measure of relative purchasing power. The cost of living is 12.2% higher in Queen Annes County, Maryland than the U.S. average.

Cost of Living Information

	Annual Average Salary	Cost of Living Index (Base US)	US Purchasing Power
Queen Annes County, Maryland	\$52,957	112.2	\$47,209
Maryland	\$71,114	120.1	\$59,193
USA	\$68,132	100.0	\$68,132

Source: [JobsEQ®](#)

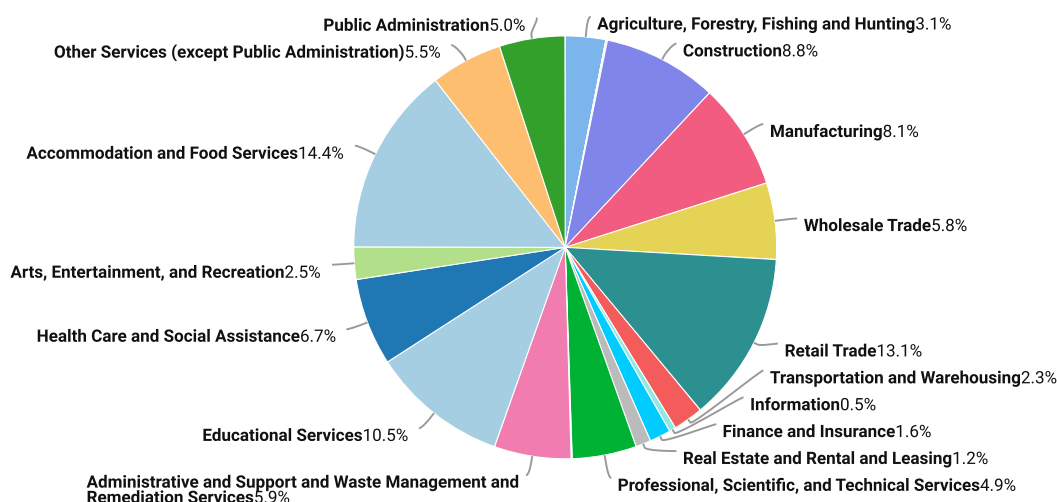
Data as of 2022Q3

Cost of Living per [COLI](#), data as of 2022Q4, imputed by Chmura where necessary.

Industry Snapshot

The largest sector in Queen Annes County, Maryland is Accommodation and Food Services, employing 2,487 workers. The next-largest sectors in the region are Retail Trade (2,248 workers) and Educational Services (1,800). High location quotients (LQs) indicate sectors in which a region has high concentrations of employment compared to the national average. The sectors with the largest LQs in the region are Agriculture, Forestry, Fishing and Hunting (LQ = 2.31), Accommodation and Food Services (1.71), and Wholesale Trade (1.56).

Total Workers for Queen Annes County, Maryland by Industry



Source: JobsEQ®, Data as of 2022Q3

Employment data are derived from the Quarterly Census of Employment and Wages, provided by the Bureau of Labor Statistics and imputed where necessary. Data are updated through 2022Q2 with preliminary estimates updated to 2022Q3.

Sectors in Queen Annes County, Maryland with the highest average wages per worker are Wholesale Trade (\$137,878), Professional, Scientific, and Technical Services (\$79,998), and Management of Companies and Enterprises (\$74,660). Regional sectors with the best job growth (or most moderate job losses) over the last 5 years are Manufacturing (+251 jobs), Administrative and Support and Waste Management and Remediation Services (+225), and Construction (+156).

Over the next 1 year, employment in Queen Annes County, Maryland is projected to expand by 56 jobs. The fastest growing sector in the region is expected to be Mining, Quarrying, and Oil and Gas Extraction with a +1.8% year-over-year rate of growth. The strongest forecast by number of jobs over this period is expected for Accommodation and Food Services (+31 jobs), Health Care and Social Assistance (+11), and Other Services (except Public Administration) (+7).

Queen Annes County, Maryland, 2022Q3¹

NAICS	Industry	Empl	Current	5-Year History			1-Year Forecast				
			Avg Ann Wages	LQ	Empl Change	Ann %	Total Demand	Exits	Transfers	Empl Growth	Ann % Growth
72	Accommodation and Food Services	2,487	\$26,629	1.71	92	0.8%	467	197	239	31	1.3%
44	Retail Trade	2,248	\$30,381	1.29	-278	-2.3%	307	137	181	-10	-0.5%
61	Educational Services	1,800	\$50,248	1.31	-132	-1.4%	179	84	93	2	0.1%
23	Construction	1,508	\$57,284	1.47	156	2.2%	150	53	95	2	0.1%
31	Manufacturing	1,398	\$60,725	1.00	251	4.0%	149	56	96	-3	-0.2%
62	Health Care and Social Assistance	1,151	\$52,851	0.47	-15	-0.3%	130	55	64	11	1.0%
56	Administrative and Support and Waste Management and Remediation Services	1,010	\$43,074	0.90	225	5.2%	124	50	73	1	0.1%
42	Wholesale Trade	1,005	\$137,878	1.56	51	1.0%	112	41	70	1	0.1%
81	Other Services (except Public Administration)	946	\$35,115	1.28	82	1.8%	122	48	66	7	0.7%
92	Public Administration	865	\$55,121	1.09	106	2.6%	84	36	50	-2	-0.2%
54	Professional, Scientific, and Technical Services	845	\$79,998	0.67	112	2.9%	82	28	48	6	0.7%
11	Agriculture, Forestry, Fishing and Hunting	533	\$52,079	2.31	-36	-1.3%	68	30	38	0	0.1%
71	Arts, Entertainment, and Recreation	427	\$29,789	1.30	-108	-4.4%	67	27	37	4	0.9%
48	Transportation and Warehousing	399	\$54,895	0.47	41	2.2%	49	19	28	1	0.3%
52	Finance and Insurance	281	\$71,361	0.40	-22	-1.5%	26	10	16	0	0.0%
53	Real Estate and Rental and Leasing	200	\$61,663	0.66	19	2.0%	20	9	11	-1	-0.3%
51	Information	84	\$43,761	0.24	7	1.8%	10	3	5	1	1.7%
22	Utilities	18	\$56,847	0.20	-8	-7.0%	2	1	1	0	0.8%
55	Management of Companies and Enterprises	15	\$74,660	0.06	5	8.8%	1	1	1	0	0.1%
21	Mining, Quarrying, and Oil and Gas Extraction	1	\$39,596	0.02	-7	-32.9%	0	0	0	0	1.8%
Total - All Industries		17,221	\$52,957	1.00	542	0.6%	2,044	831	1,156	56	0.3%

Source: [JobsEQ®](#)

Data as of 2022Q3

Note: Figures may not sum due to rounding.

1. All data based upon a four-quarter moving average

Exits and transfers are approximate estimates based upon occupation separation rates.

Employment data are derived from the Quarterly Census of Employment and Wages, provided by the Bureau of Labor Statistics and imputed where necessary. Data are updated through 2022Q2 with preliminary estimates updated to 2022Q3. Forecast employment growth uses national projections adapted for regional growth patterns.

Occupation Snapshot

The largest major occupation group in Queen Annes County, Maryland is Food Preparation and Serving Related Occupations, employing 2,302 workers. The next-largest occupation groups in the region are Sales and Related Occupations (2,083 workers) and Office and Administrative Support Occupations (1,670). High location quotients (LQs) indicate occupation groups in which a region has high concentrations of employment compared to the national average. The major groups with the largest LQs in the region are Farming, Fishing, and Forestry Occupations (LQ = 1.97), Food Preparation and Serving Related Occupations (1.69), and Building and Grounds Cleaning and Maintenance Occupations (1.57).

Occupation groups in Queen Annes County, Maryland with the highest average wages per worker are Legal Occupations (\$117,100), Management Occupations (\$116,500), and Computer and Mathematical Occupations (\$110,000). The unemployment rate in the region varied among the major groups from 1.0% among Healthcare Practitioners and Technical Occupations to 6.6% among Food Preparation and Serving Related Occupations.

Over the next 1 year, the fastest growing occupation group in Queen Annes County, Maryland is expected to be Healthcare Support Occupations with a +1.3% year-over-year rate of growth. The strongest forecast by number of jobs over this period is expected for Food Preparation and Serving Related Occupations (+27 jobs) and Personal Care and Service Occupations (+6). Over the same period, the highest separation demand (occupation demand due to retirements and workers moving from one occupation to another) is expected in Food Preparation and Serving Related Occupations (447 jobs) and Sales and Related Occupations (286).

Queen Annes County, Maryland, 2022Q3¹

SOC	Occupation	Empl	Mean Ann Wages ²	Current			5-Year History			Total Demand	1-Year Forecast			
				LQ	Unempl	Unempl Rate	Online Job Ads ³	Empl Change	Ann %		Exits	Transfers	Empl Growth	Ann % Growth
35-0000	Food Preparation and Serving Related	2,302	\$32,100	1.69	172	6.6%	62	41	0.4%	475	206	241	27	1.2%
41-0000	Sales and Related	2,083	\$45,500	1.29	117	4.1%	138	-203	-1.8%	278	127	159	-8	-0.4%
43-0000	Office and Administrative Support	1,670	\$44,500	0.79	84	2.9%	36	-45	-0.5%	185	89	108	-11	-0.7%
11-0000	Management	1,257	\$116,500	1.07	34	1.8%	55	121	2.0%	115	42	68	5	0.4%
25-0000	Educational Instruction and Library	1,219	\$63,400	1.33	30	2.1%	12	-62	-1.0%	114	55	55	4	0.3%
53-0000	Transportation and Material Moving	1,172	\$41,400	0.78	99	4.6%	81	92	1.7%	168	64	99	5	0.5%
47-0000	Construction and Extraction	1,035	\$51,000	1.33	61	4.6%	15	75	1.5%	103	36	65	2	0.2%
37-0000	Building and Grounds Cleaning and Maintenance	894	\$37,800	1.57	43	4.3%	15	115	2.8%	121	51	68	2	0.3%
51-0000	Production	861	\$45,500	0.88	41	3.8%	31	56	1.4%	94	37	60	-4	-0.4%
13-0000	Business and Financial Operations	832	\$83,800	0.75	31	1.9%	16	189	5.3%	78	25	49	3	0.4%
49-0000	Installation, Maintenance, and Repair	673	\$53,100	1.01	25	2.3%	45	5	0.1%	69	25	42	2	0.3%
39-0000	Personal Care and Service	486	\$35,500	1.17	50	5.9%	10	-30	-1.2%	94	35	52	6	1.2%
29-0000	Healthcare Practitioners and Technical	474	\$97,100	0.48	12	1.0%	119	35	1.5%	33	15	14	4	0.9%
15-0000	Computer and Mathematical	438	\$110,000	0.74	11	1.3%	14	108	5.8%	35	10	22	4	0.9%
31-0000	Healthcare Support	363	\$35,600	0.48	26	3.1%	105	-15	-0.8%	58	23	31	5	1.3%
33-0000	Protective Service	317	\$63,000	0.86	19	2.8%	5	19	1.2%	37	17	19	0	0.1%

Queen Annes County, Maryland, 2022Q3¹

SOC	Occupation	Empl	Mean Ann Wages ²	Current			Online Job Ads ³	5-Year History		Total Demand	1-Year Forecast			Ann % Growth
				LQ	Unempl	Unempl Rate		Empl Change	Ann %		Exits	Transfers	Empl Growth	
21- 0000	Community and Social Service	295	\$53,000	0.97	6	1.5%	21	17	1.2%	31	12	17	2	0.6%
27- 0000	Arts, Design, Entertainment, Sports, and Media	274	\$61,600	0.90	22	4.0%	4	18	1.4%	31	12	17	2	0.8%
45- 0000	Farming, Fishing, and Forestry	217	\$33,900	1.97	8	4.8%	1	-25	-2.1%	35	12	23	1	0.3%
17- 0000	Architecture and Engineering	189	\$92,900	0.67	8	1.8%	13	17	1.9%	14	5	9	0	0.2%
23- 0000	Legal	86	\$117,100	0.59	2	1.3%	n/a	-1	-0.2%	6	3	3	0	0.4%
19- 0000	Life, Physical, and Social Science	84	\$83,300	0.55	6	2.2%	9	15	4.1%	8	2	6	0	0.3%
Total - All Occupations		17,221	\$56,100	1.00	909	3.4%	810	542	0.6%	2,186	903	1,227	56	0.3%

Source: [JobsEQ®](#)

Data as of 2022Q3 unless noted otherwise

Note: Figures may not sum due to rounding.

1. Data based on a four-quarter moving average unless noted otherwise.

2. Wage data represent the average for all Covered Employment

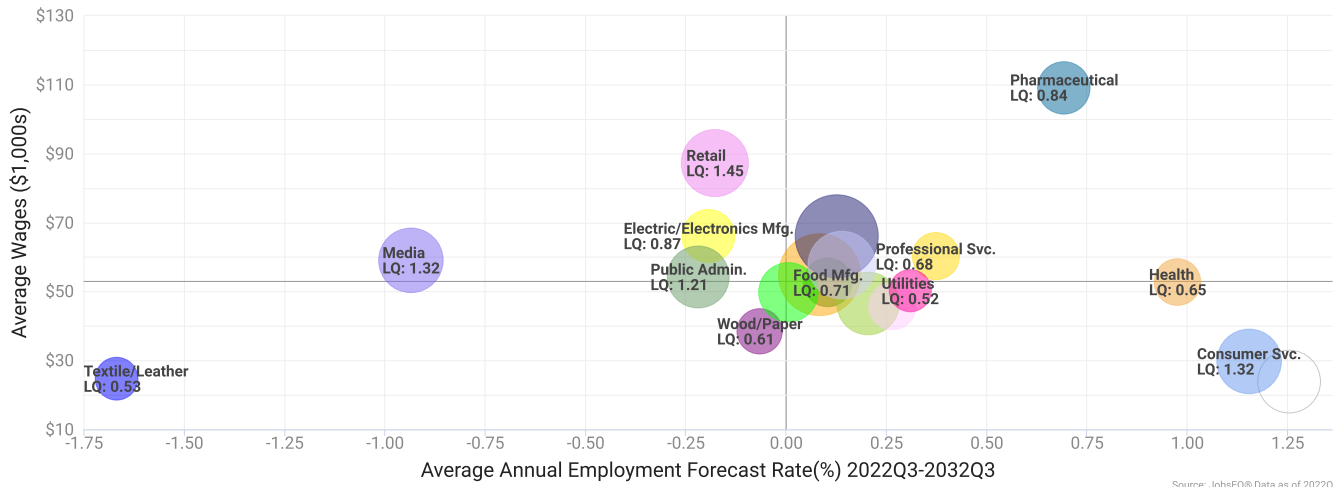
3. Data represent found online ads active within the last thirty days in the selected region. Due to alternative county-assignment algorithms, ad counts in this analytic may not match that shown in RTI (nor in the popup window ad list). Ad counts for ZCTA-based regions are estimates.

Occupation employment data are estimated via industry employment data and the estimated industry/occupation mix. Industry employment data are derived from the Quarterly Census of Employment and Wages, provided by the Bureau of Labor Statistics and currently updated through 2022Q2, imputed where necessary with preliminary estimates updated to 2022Q3. Wages by occupation are as of 2022 provided by the BLS and imputed where necessary. Forecast employment growth uses national projections from the Bureau of Labor Statistics adapted for regional growth patterns.

Industry Clusters

A cluster is a geographic concentration of interrelated industries or occupations. The industry cluster in Queen Annes County, Maryland with the highest relative concentration is Machinery Mfg. with a location quotient of 2.29. This cluster employs 716 workers in the region with an average wage of \$65,935. Employment in the Machinery Mfg. cluster is projected to expand in the region about 0.1% per year over the next ten years.

Industry Clusters for Queen Annes County, Maryland as of 2022Q3

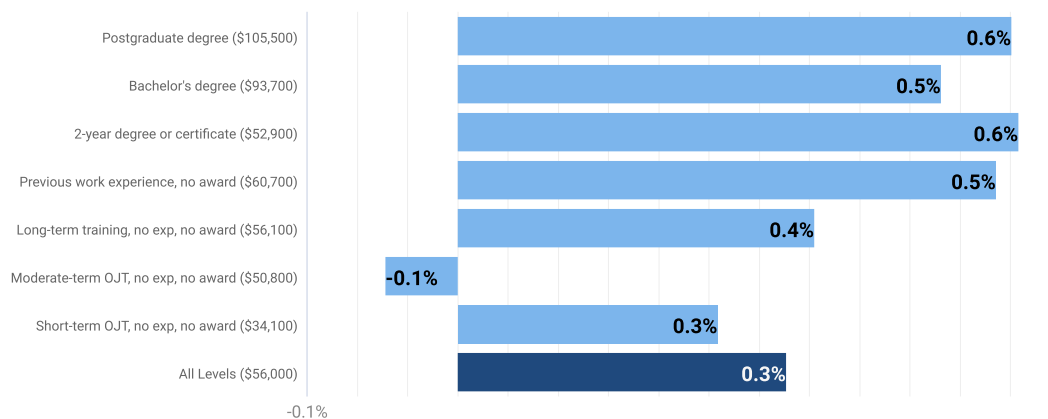


Location quotient and average wage data are derived from the Quarterly Census of Employment and Wages, provided by the Bureau of Labor Statistics, imputed where necessary, and updated through 2022Q2 with preliminary estimates updated to 2022Q3. Forecast employment growth uses national projections from the Bureau of Labor Statistics adapted for regional growth patterns.

Education Levels

Expected growth rates for occupations vary by the education and training required. While all employment in Queen Annes County, Maryland is projected to grow 0.3% over the next ten years, occupations typically requiring a postgraduate degree are expected to grow 0.6% per year, those requiring a bachelor's degree are forecast to grow 0.5% per year, and occupations typically needing a 2-year degree or certificate are expected to grow 0.6% per year.

Annual Average Projected Job Growth by Training Required

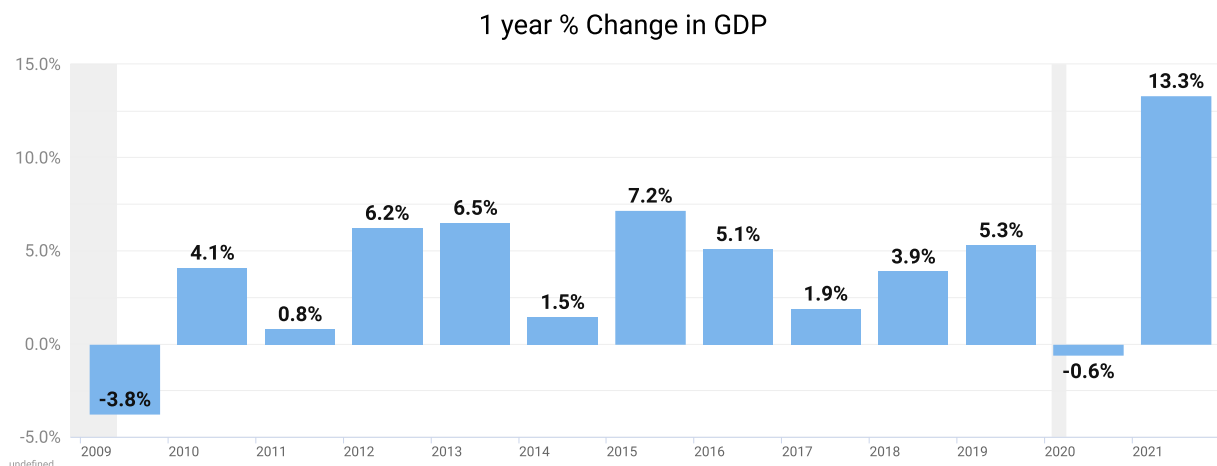


Source: JobsEQ®, Data as of 2022Q3

Employment by occupation data are estimates as of 2022Q3. Education levels of occupations are based on BLS assignments. Forecast employment growth uses national projections from the Bureau of Labor Statistics adapted for regional growth patterns.

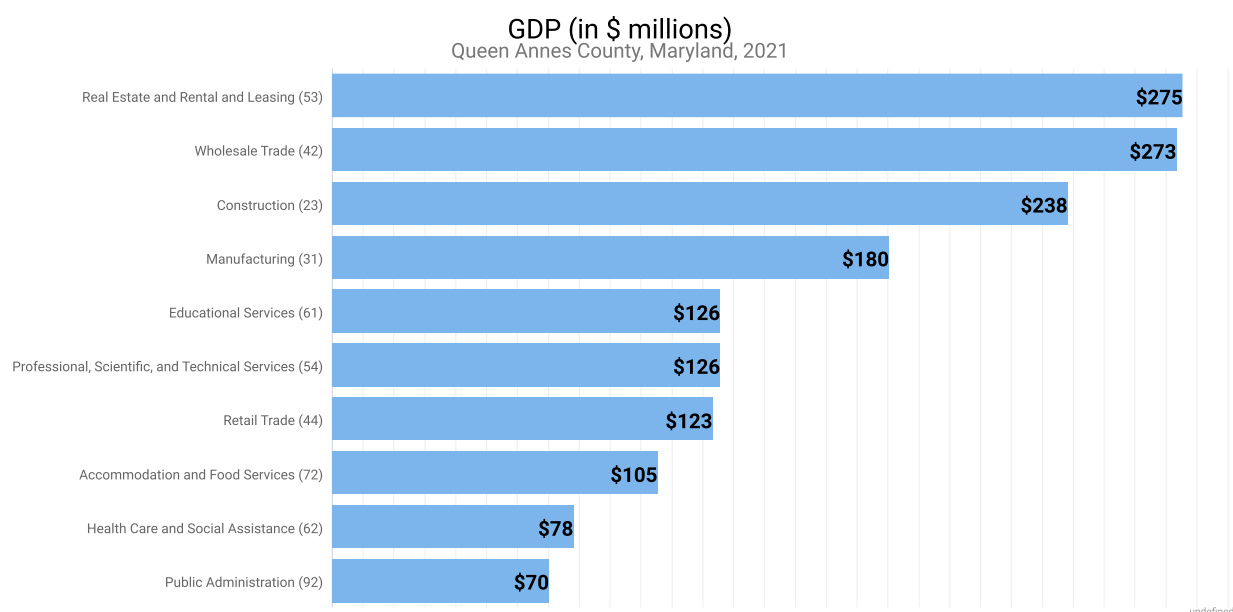
Gross Domestic Product

Gross Domestic Product (GDP) is the total value of goods and services produced by a region. In 2021, nominal GDP in Queen Annes County, Maryland expanded 13.3%. This follows a contraction of 0.6% in 2020. As of 2021, total GDP in Queen Annes County, Maryland was \$1,926,143,000.



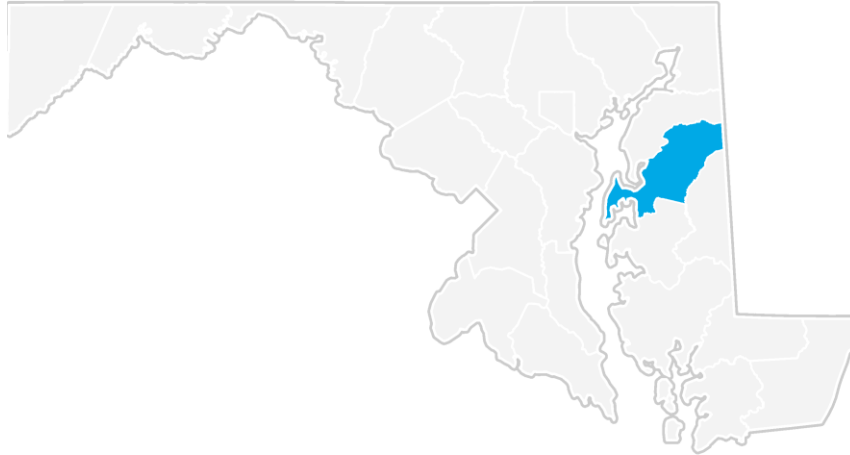
Gross Domestic Product data are provided by the Bureau of Economic Analysis, imputed by Chmura where necessary, updated through 2021.

Of the sectors in Queen Annes County, Maryland, Real Estate and Rental and Leasing contributed the largest portion of GDP in 2021, \$275,463,000. The next-largest contributions came from Wholesale Trade (\$273,403,000); Construction (\$238,088,000); and Manufacturing (\$180,338,000).



Gross Domestic Product data are provided by the Bureau of Economic Analysis, imputed by Chmura where necessary, updated through 2021.

Queen Annes County, Maryland Regional Map



FAQ

What is a location quotient?

A location quotient (LQ) is a measurement of concentration in comparison to the nation. An LQ of 1.00 indicates a region has the same concentration of an industry (or occupation) as the nation. An LQ of 2.00 would mean the region has twice the expected employment compared to the nation and an LQ of 0.50 would mean the region has half the expected employment in comparison to the nation.

What is separation demand?

Separation demand is the number of jobs required due to separations—labor force exits (including retirements) and turnover resulting from workers moving from one occupation into another. Note that separation demand does not include all turnover—it does not include when workers stay in the same occupation but switch employers. The total projected demand for an occupation is the sum of the separation demand and the growth demand (which is the increase or decrease of jobs in an occupation expected due to expansion or contraction of the overall number of jobs in that occupation).

What is a cluster?

A cluster is a geographic concentration of interrelated industries or occupations. If a regional cluster has a location quotient of 1.25 or greater, the region is considered to possess a competitive advantage in that cluster.

What is the difference between industry wages and occupation wages?

Industry wages and occupation wages are estimated via separate data sets, often the time periods being reported do not align, and wages are defined slightly differently in the two systems (for example, certain bonuses are included in the industry wages but not the occupation wages). It is therefore common that estimates of the average industry wages and average occupation wages in a region do not match exactly.

What is NAICS?

The North American Industry Classification System (NAICS) is used to classify business establishments according to the type of economic activity. The NAICS Code comprises six levels, from the “all industry” level to the 6-digit level. The first two digits define the top level category, known as the “sector,” which is the level examined in this report.

What is SOC?

The Standard Occupational Classification system (SOC) is used to classify workers into occupational categories. All workers are classified into one of over 804 occupations according to their occupational definition. To facilitate classification, occupations are combined to form 22 major groups, 95 minor groups, and 452 occupation groups. Each occupation group includes detailed occupations requiring similar job duties, skills, education, or experience.

About This Report

This report and all data herein were produced by JobsEQ®, a product of Chmura Economics & Analytics. The information contained herein was obtained from sources we believe to be reliable. However, we cannot guarantee its accuracy and completeness.